



Gate, Globe & Check valves
Forged Steel
Socket weld end
Class 800, 1500, 2500
Size 1/2" - 2"



RWTUV



Applications

- General Industry, power stations, process engineering
- For water, steam, gas, oil and other non-aggressive media
- Further applications on request

Operating data

- Pressure range upto 439 Bar/6250 PSI
- Temperature range up to +593°C/1100°F

Materials

- # A105 from 0°C to 425°C
- # F22 from 0°C to 593°C

Design

- As per API 602 Gate Valve
- As per BS 5352 Globe Valve
- As per BS 5352 Check Valve
- As per ASME B 16.34 'Y' Globe Valve
- As per ASME B 16.34 'Y' Check Valve
- Welded Bonnet Design for # 1500 & # 2500
- Stellite hard-faced Seats
- Encapsulated gaskets for # 800 Valves

Variants on request

- 13% Cr Seats for # 800 Gate Valves
- Locking device
- Alternate packing / Gaskets
- Flanged Ends to # 150/300/600
- BW execution on # 1500 Globe & Check Valves
- ST6 (HF) Wedge / Disc for Temperatures beyond 350°C / 660°F
- Screwed Ends to NPT / BSP (Female) # 800
- Position indicator
- Other materials
- Other executions

On all enquiries/orders please specify

- | | |
|--------------------------|------------------------------------|
| 1. Type | 7. Material of construction |
| 2. ANSI pressure class | 8. Flow medium |
| 3. Size | 9. Type of end connection |
| 4. Design pressure | 10. Variants |
| 5. Operating pressure | 11. Leaflet number |
| 6. Differential pressure | 12. Valve data sheet if applicable |

Operating instructions no. : 0500.80 / 01 - 18 G3

When ordering spares indicate valve serial no. and year of manufacture.





Pressure Temperature Chart

MATERIAL : A 105

NOTE : Permissible, but not recommended for prolonged usage above about 800°F

TABLE - A : Standard Class

Temperature		Pressure class											
		# 150		# 300		# 600		# 800*		# 1500		# 2500	
		PSI	kg/cm ²	PSI	kg/cm ²	PSI	kg/cm ²	PSI	kg/cm ²	PSI	kg/cm ²	PSI	kg/cm ²
-20 to 100	-17 to 38	285	20.0	740	52.0	1480	104.1	1975	138.8	3705	260.5	6170	433.8
200	93.3	260	18.3	675	47.5	1350	94.9	1800	126.5	3375	237.3	5625	395.5
300	148.9	230	16.2	655	46.1	1315	92.5	1750	123	3280	230.6	5470	384.6
400	204.4	200	14.1	635	44.6	1270	89.3	1690	118.8	3170	222.9	5280	371.2
500	260	170	12.0	600	42.2	1200	84.4	1595	112	2995	210.6	4990	350.8
600	315.6	140	9.8	550	38.7	1095	77	1460	102.6	2735	192.3	4560	320.6
650	343.3	125	8.8	535	37.6	1075	75.6	1430	100.5	2685	188.8	4475	314.6
700	371.1	110	7.7	535	37.6	1065	74.9	1420	99.8	2665	187.4	4440	312.2
750	398.9	95	6.7	505	35.5	1010	71	1345	94.6	2520	177.2	4200	295.3
800	426.7	80	5.6	410	28.8	825	58	1100	77.3	2060	144.8	3430	241.2
850	454.4	65	4.6	270	19.0	535	37.6	715	50.3	1340	94.2	2230	156.8
900	482.2	50	3.5	170	12.0	345	24.3	460	32.3	860	60.5	1430	100.5
950	510	35	2.5	105	7.4	205	14.4	275	19.3	515	36.2	860	60.5
1000	537.8	20	1.4	50	3.5	105	7.4	140	9.9	260	18.3	430	30.2

MATERIAL : A 182 F22

NOTE : Use normalised and tempered material only

TABLE - B : Standard Class

Temperature		Pressure class											
		# 150		# 300		# 600		# 800*		# 1500		# 2500	
		PSI	kg/cm ²	PSI	kg/cm ²	PSI	kg/cm ²	PSI	kg/cm ²	PSI	kg/cm ²	PSI	kg/cm ²
-20 to 100	-17 to 38	290	20.4	750	52.7	1500	105.5	2000	140.5	3750	263.7	6250	439.4
200	93.3	260	18.3	715	52.7	1500	105.5	1910	134.2	3750	263.7	6250	439.4
300	148.9	230	16.2	730	51.3	1455	102.3	1805	126.8	3640	255.9	6070	426.8
400	204.4	200	14.1	705	49.6	1410	99.1	1730	121.6	3530	248.2	5880	413.4
500	260	170	12	665	46.8	1330	93.5	1705	119.8	3325	233.8	5540	389.5
600	315.6	140	9.8	605	42.5	1210	85.1	1615	113.5	3025	212.7	5040	354.4
650	343.3	125	8.8	590	41.5	1175	82.6	1570	110.3	2940	206.7	4905	344.9
700	371.1	110	7.7	570	40.1	1135	79.8	1515	106.5	2840	199.7	4730	332.6
750	398.9	95	6.7	530	37.3	1065	74.9	1420	99.8	2660	187.0	4430	311.5
800	426.7	80	5.6	510	35.9	1015	71.4	1355	95.2	2540	178.6	4230	297.4
850	454.4	65	4.6	485	34.1	975	68.6	1300	91.4	2435	171.2	4060	285.5
900	482.2	50	3.5	450	31.6	900	63.3	1200	84.3	2245	157.8	3745	263.3
950	510	35	2.5	375	26.4	755	53.1	1005	70.6	1885	132.5	3145	221.1
1000	537.8	20	1.4	260	18.3	520	36.6	715	50.2	1305	91.8	2170	152.6
1050	565.6	20	1.4	175	12.3	350	24.6	530	37.2	875	61.5	1455	102.3
1100	593.3	20	1.4	110	7.7	220	15.5	300	21.1	550	38.7	915	64.3
1150	621.1	20	1.4	70	4.9	135	9.5	275	19.3	345	24.3	570	40.1
1200	648.9	20	1.4	40	2.8	80	5.6	145	10.2	205	14.4	345	24.3

* Pressure/Temperature Class Values as per API 602



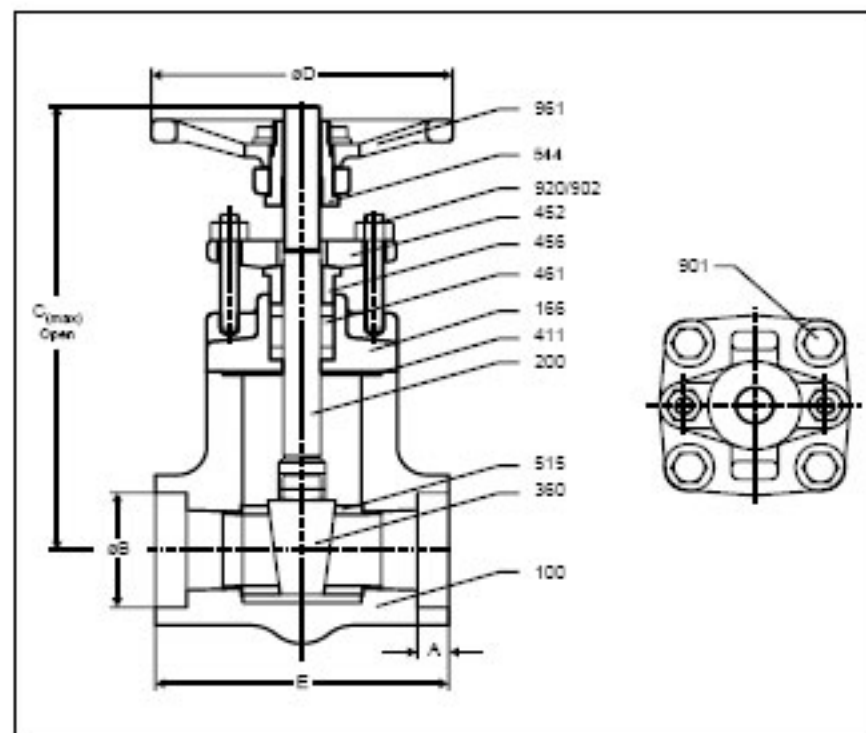
800 GATE VALVE

A. DESIGN / TEST SPECIFICATION

TEST (API 598)	(kg/cm ²)	(PSI)	TESTING MEDIUM
SHELL	210	2983	KEROSENE/WATER
BACK SEAT	153	2173	
SEAT LEAK	4 TO 7	60 TO 100	AIR
DESIGN SPECIFICATIONS			
GENERAL VALVE DESIGN & PR. TEMP. RATING			API 602
SOCKET WELD END DIMN			ASME B16.11
END TO END AS PER MANUFACTURER'S STANDARD			

B. MATERIAL

PART NO.	PART NAME	MATERIALS AS PER ASTM
100	BODY	A 105
166	BONNET	A 105
200	STEM	A 479-410-2
360	WEDGE	A 217-CA15
411	GASKET	SS + GRPH
452	GLAND FLANGE	A 105
456	GLAND BUSH	A 276-410
461	GLAND PACKING	GRAPHITE
515	SEAT RING	A 276-410+ST6
544	STEMNUT	A 473-416
901	HEX BOLT	A 193-B7
902	STUD	A 193-B6
920	HEX NUT	A 194-2H
961	HAND WHEEL	IS 2108-A



C. DIMENSIONS

SIZE		E		ØB		C		ØD		A	
INCH	MM	INCH	MM	INCH	MM	INCH	MM	INCH	MM	INCH	MM
1/2	15	2.9	73	0.9	21.8	5.5	140	3.7	95	0.4	9.5
3/4	20	3.2	82	1.1	27.1	6.1	155	3.7	95	0.5	13.0
1	25	3.5	90	1.3	33.8	6.7	170	4.1	103	0.5	13.0
1½	40	5.0	127	1.9	48.7	9.4	240	5.0	127	0.5	13.0
2	50	5.8	148	2.4	61.1	11.2	285	11	280	0.6	16.0

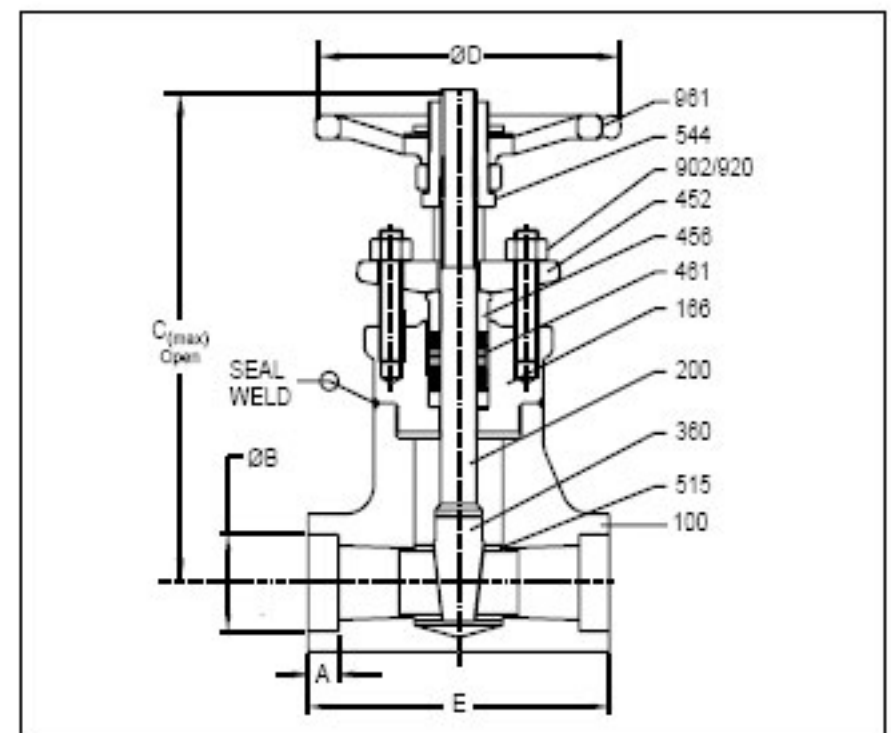
1500 GATE VALVE

A. DESIGN / TEST SPECIFICATION

TEST (API 598)	(kg/cm ²)	(PSI)	TESTING MEDIUM
SHELL	396	5625	KEROSENE/WATER
BACK SEAT	291	4125	
SEAT LEAK	4 TO 6	60 TO 100	AIR
DESIGN SPECIFICATIONS			
GENERAL VALVE DESIGN			API 602
PR. TEMP. RATING			ASME B16.34
SOCKET WELD END DIMN			ASME B16.11
END TO END AS PER MANUFACTURER'S STANDARD			

B. MATERIAL

PART NO.	PART NAME	MATERIALS AS PER ASTM	
100	BODY	A 105	A 182 F22
166	BONNET	A 105	A 182 F22
200	STEM	A 479-410-2	A 479-410-2
360	WEDGE	A 217-CA15	Stellited
452	GLAND FLANGE	A 105	A 105
456	GLAND BUSH	A 276-410	A 276-410
461	GLAND PACKING	GRAPHITE	GRAPHITE
515	SEAT RING	A 276-410+ST6	A 276-410+ST6
544	STEMNUT	A 473-416	A 473-416
902	STUD	A 193-B8M Cl.2	A193-B8MCL2
920	HEX NUT	A 194-2H	A 194-2H
961	HAND WHEEL	IS 2108-A	IS 2108-A



C. DIMENSIONS

SIZE		E		ØB		C		ØD		A	
INCH	MM	INCH	MM	INCH	MM	INCH	MM	INCH	MM	INCH	MM
1/2	15	2.9	73	0.9	21.8	6.7	170	3.7	95	0.4	9.5
3/4	20	3.7	94	1.1	27.1	7.5	190	3.7	95	0.5	13.0
1	25	4.8	122	1.3	33.8	8.3	210	5.0	127	0.5	13.0
1½	40	6.3	160	1.9	48.7	11.4	290	5.8	147	0.5	13.0
2	50	7.0	178	2.4	61.1	12.4	315	5.8	147	0.6	16.0



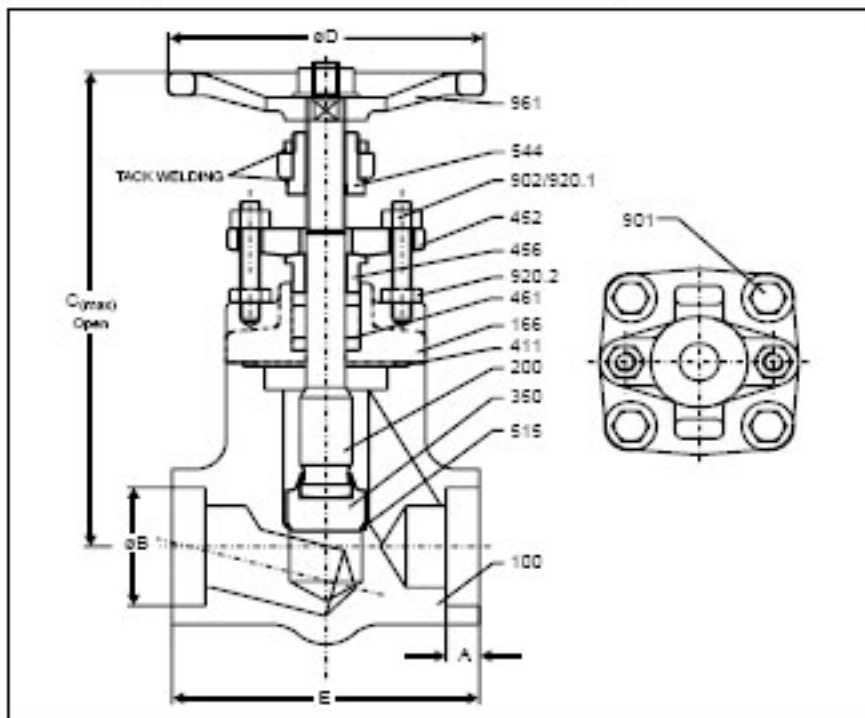
800 GLOBE VALVE

A. DESIGN / TEST SPECIFICATIONS

TEST (API 598)	(kg/cm ²)	(PSI)	TESTING MEDIUM
SHELL	210	2983	KEROSENE/WATER
BACK SEAT	153	2173	
SEAT LEAK	153	2173	
DESIGN SPECIFICATIONS			
GENERAL VALVE DESIGN			BS 5352
PR. TEMP. RATING			ASME B16.34
SOCKET WELD END DIMN			ASME B16.11
END TO END AS PER MANUFACTURER'S STANDARD			

B. MATERIAL

PART NO.	PART NAME	MATERIALS AS PER ASTM
100	BODY	A 105
166	BONNET	A 105
200	STEM	A 479-410-2
350	DISC	A 276-410 (H)
411	GASKET	SS + GRPH
452	GLAND FLANGE	A 105
456	GLAND BUSH	A 276-410
461	GLAND PACKING	GRAPHITE
515	SEAT	ST6 (INTEGRAL)
544	STEM NUT	A 582-416
901	HEX BOLT	A 193-B7
902	STUD	A 193-B6
920.1	HEX NUT	A 194-2H
920.2	HEX NUT	A 194-2H
961	HAND WHEEL	IS 2108-A



C. DIMENSIONS

SIZE		E		ØB		C		ØD		A	
INCH	MM	INCH	MM	INCH	MM	INCH	MM	INCH	MM	INCH	MM
1/2	15	2.9	73	0.9	21.8	4.9	125	3.7	95	0.4	9.5
3/4	20	3.2	82	1.1	27.1	5.6	142	3.7	95	0.5	13.0
1	25	4.3	108	1.3	33.8	6.2	158	4.1	103	0.5	13.0
1½	40	6.0	152	1.9	48.7	8.7	220	5.0	127	0.5	13.0
2	50	5.8	148	2.4	61.1	11.2	285	11.0	280	0.6	16.0

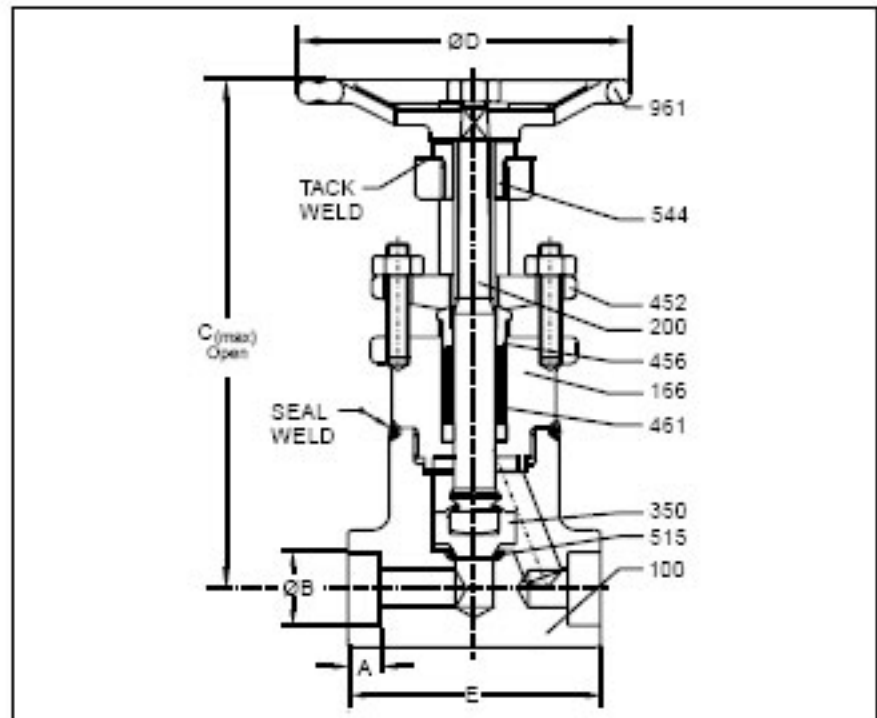
1500 GLOBE VALVE

A. DESIGN / TEST SPECIFICATIONS

TEST (API 598)	(kg/cm ²)	(PSI)	TESTING MEDIUM
SHELL	398	5625	KEROSENE/WATER
BACK SEAT	291	4125	
SEAT LEAK	291	4125	
DESIGN SPECIFICATIONS			
GENERAL VALVE DESIGN			BS 5352
PR. TEMP. RATING			ASME B16.34
SOCKET WELD END DIMN			ASME B16.11
END TO END AS PER MANUFACTURER'S STANDARD			

B. MATERIAL

PART NO.	PART NAME	MATERIALS AS PER ASTM	
100	BODY	A 105	A 182 F22
166	BONNET	A 105	A 182 F22
200	STEM	A 479-410-2	A 479-410-2
350	DISC	A 276-410 (H)	SS 304+ST6
452	GLAND FLANGE	A 105	A 105
456	GLAND BUSH	A 276-410	A 276-410
461	GLAND PACKING	GRAPHITE	GRAPHITE
515	SEAT	ST6 (INTEGRAL)	ST6 (INTEGRAL)
544	STEM NUT	A 582-416	A 582-416
902.1	STUD	A 193-B8M Cl.2	A 193-B8M Cl.2
920.1	HEX NUT	A 194-2H	A 194-2H
920.2	HEX NUT	A 194-2H	A 194-2H
961	HAND WHEEL	IS 2108-A	IS 2108-A



C. DIMENSIONS

SIZE		E		ØB		C		ØD		A	
INCH	MM	INCH	MM	INCH	MM	INCH	MM	INCH	MM	INCH	MM
1/2	15	2.9	73	0.9	21.8	7.1	180	5.0	127	0.4	9.5
3/4	20	3.7	94	1.1	27.1	9.1	230	7.3	185	0.5	13.0
1	25	4.8	122	1.3	33.8	9.8	250	4.8	185	0.5	13.0
1½	40	6.3	160	1.9	48.7	12.2	310	8.0	203	0.5	13.0
2	50	7.0	178	2.4	61.1	13.0	330	8.0	203	0.6	16.0



800 CHECK VALVE

A. DESIGN / TEST SPECIFICATIONS

TEST (API 598)	(kg/cm ²)	(PSI)	TESTING MEDIUM
SHELL	210	2983	KEROSENE/WATER
BACK SEAT	N.A.	N.A.	
SEAT LEAK	153	2173	
DESIGN SPECIFICATIONS			
GENERAL VALVE DESIGN			BS 5352
PR. TEMP. RATING			ASME B16.34
SOCKET WELD END DIMN			ASME B16.11
END TO END AS PER MANUFACTURER'S STANDARD			

B. MATERIAL

PART NO.	PART NAME	MATERIALS AS PER ASTM
100	BODY	A 105
160	COVER	A 105
351	DISC	A 276-410 (H)
411	GASKET	SS + GRPH
515	SEAT	ST6 (INTEGRAL)
901	HEX BOLT	A 193-B7
950	SPRING	A 313-SS 302

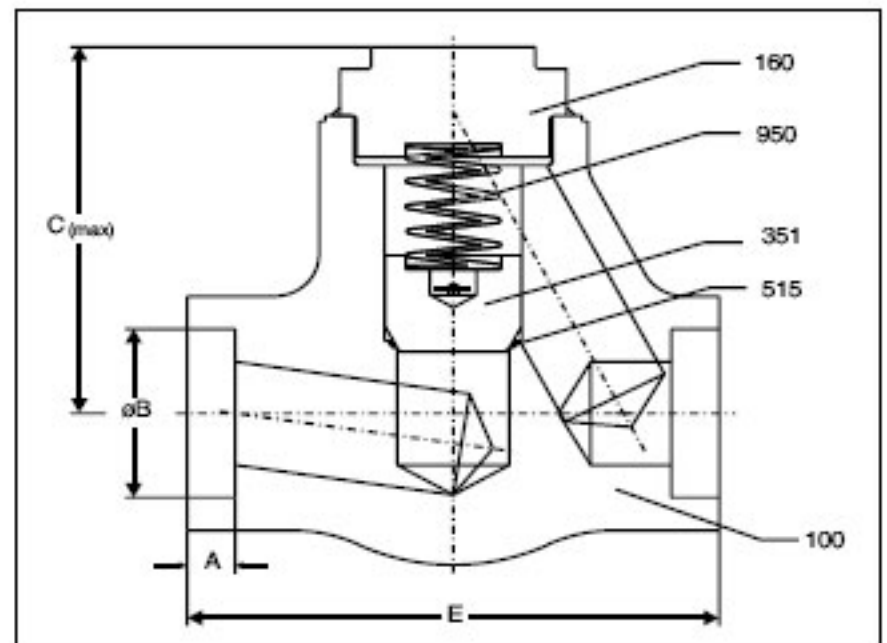
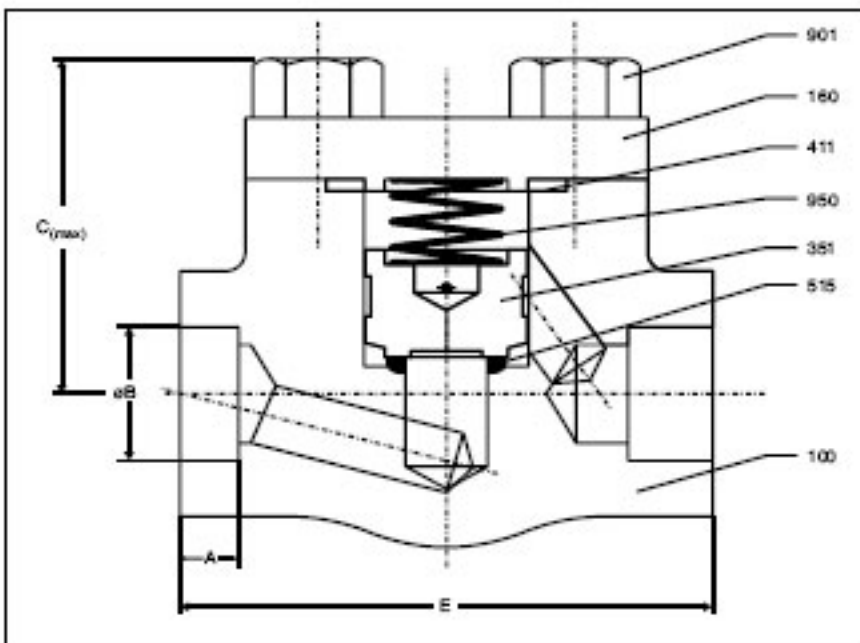
1500 CHECK VALVE

A. DESIGN / TEST SPECIFICATIONS

TEST (API 598)	(kg/cm ²)	(PSI)	TESTING MEDIUM
SHELL	396	5625	KEROSENE/WATER
BACK SEAT	N.A.	N.A.	
SEAT LEAK	291	4125	
DESIGN SPECIFICATIONS			
GENERAL VALVE DESIGN			BS 5352
PR. TEMP. RATING			ASME B16.34
SOCKET WELD END DIMN			ASME B16.11
END TO END AS PER MANUFACTURER'S STANDARD			

B. MATERIAL

PART NO.	PART NAME	MATERIALS AS PER ASTM	
100	BODY	A 105	A 182 - F22
160	COVER	A 105	A 182 - F22
351	DISC	A 276-410 (H)	SS 304 + ST6
515	SEAT	ST6 (INTEGRAL)	ST6 (INTEGRAL)
950	SPRING	A 313 - SS 302	A 313 - SS 302



C. DIMENSIONS

SIZE		E		øB		C		A	
INCH	MM	INCH	MM	INCH	MM	INCH	MM	INCH	MM
1/2	15	2.9	73	0.9	21.8	2.0	50	0.4	9.5
3/4	20	3.2	82	1.1	27.1	2.4	60	0.5	13.0
1	25	4.3	108	1.3	33.8	2.6	65	0.5	13.0
1½	40	6.0	152	1.9	48.7	3.5	90	0.5	13.0
2	50	5.8	148	2.4	61.1	4.9	125	0.6	16.0

C. DIMENSIONS

SIZE		E		øB		C		A	
INCH	MM	INCH	MM	INCH	MM	INCH	MM	INCH	MM
1/2	15	2.9	73	0.9	21.8	2.6	65	0.4	9.5
3/4	20	3.7	94	1.1	27.1	3.1	80	0.5	13.0
1	25	4.8	122	1.3	33.8	3.7	95	0.5	13.0
1½	40	6.3	160	1.9	48.7	4.7	120	0.5	13.0
2	50	7.0	178	2.4	61.1	5.5	140	0.6	16.0



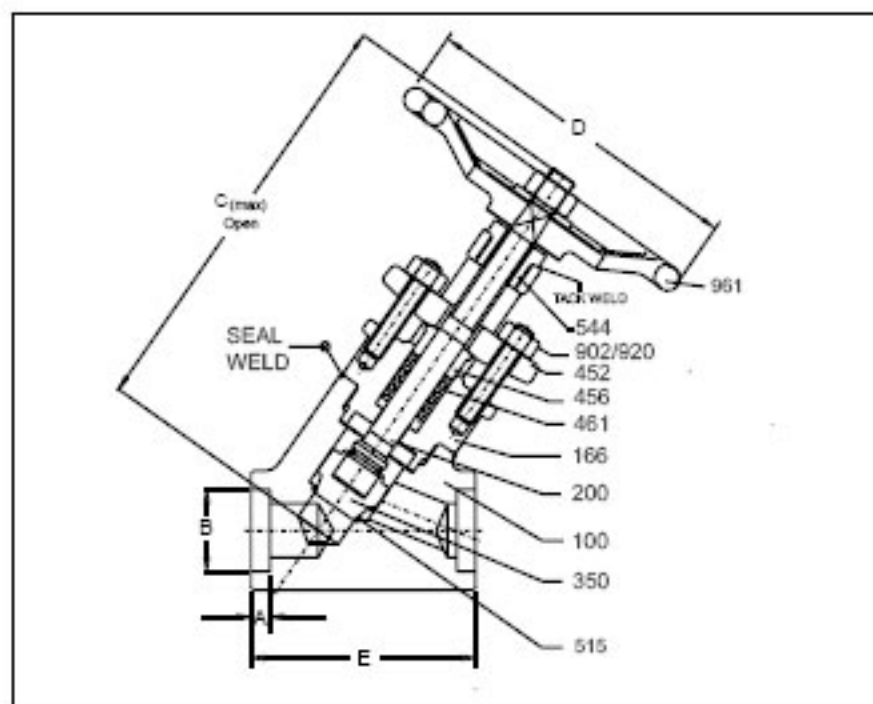
2500Y GLOBE

A. DESIGN / TEST SPECIFICATIONS

TEST (API 598)	(kg/cm ²)	(PSI)	TESTING MEDIUM
SHELL	660	9375	KEROSENE/WATER
BACK SEAT	484	6875	
SEAT LEAK	484	6875	
DESIGN SPECIFICATIONS			
GENERAL VALVE DESIGN & PR. TEMP. RATING			ASME B16.34
SOCKET WELD END DIMN			ASME B16.11
END TO END AS PER MANUFACTURER'S STANDARD			

B. MATERIAL

PART NO.	PART NAME	MATERIALS AS PER ASTM	
100	BODY	A 105	A 182-F22
166	BONNET	A 105	A 182-F22
200	STEM	A 479-410-1	A 479-410-1
350	DISC	SS 304 + ST6	SS 304 + ST6
452	GLAND FLANGE	A 105	A 105
456	GLAND BUSH	A 276-410	A 276-410
461	GLAND PACKING	GRAPHITE	GRAPHITE
515	SEAT	ST6 (INTEGRAL)	ST6 (INTEGRAL)
544	STEM NUT	A 582-416	A 582-416
902	STUD	A 193-B8M Cl.2	A 193-B8M Cl.2
920	HEX NUT	A 194-2H	A 194-2H
961	HAND WHEEL	IS 2108-A	IS 2108-A



C. DIMENSIONS

SIZE		E		ØB		C		ØD		A	
INCH	MM	INCH	MM	INCH	MM	INCH	MM	INCH	MM	INCH	MM
1/2	15	3.3	85	0.9	21.8	7.7	195	5.0	127	0.4	10
3/4	20	3.9	98	1.1	27.1	9.1	230	7.3	185	0.5	13.0
1	25	4.1	104	1.3	33.8	9.8	250	7.3	185	0.5	13.0
1½	40	5.7	144	1.9	48.7	12.4	315	8.0	203	0.5	13.0
2	50	5.7	144	2.4	61.1	15.7	400	10.0	255	0.6	16.0

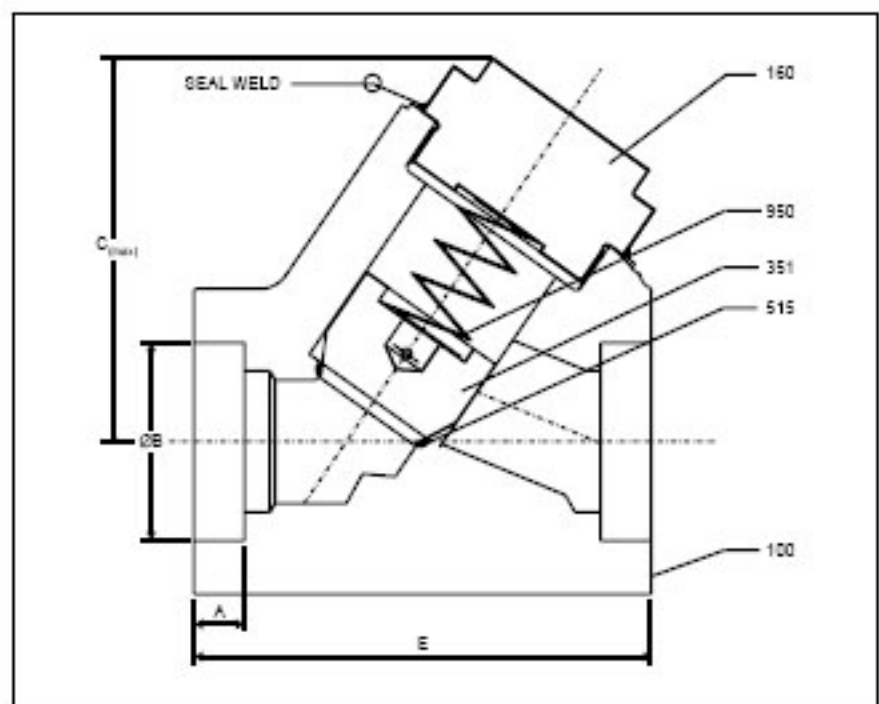
2500Y CHECK

A. DESIGN / TEST SPECIFICATIONS

TEST (API 598)	(Kg/cm ²)	(PSI)	TESTING MEDIUM
SHELL	660	9375	KEROSENE/WATER
BACK SEAT	-	-	
SEAT LEAK	484	6875	
DESIGN SPECIFICATIONS			
GENERAL VALVE DESIGN & PR. TEMP. RATING			ASME B16.34
SOCKET WELD END DIMN			ASME B16.11
END TO END AS PER MANUFACTURER'S STANDARD			

B. MATERIAL

PART NO.	PART NAME	MATERIALS AS PER ASTM	
100	BODY	A105	A182 - F22
160	COVER	A105	A182 - F22
351	DISC	SS 304 + ST6	SS 304 + ST6
515	SEAT	ST6 (INTEGRAL)	ST6 (INTEGRAL)
950	SPRING	A 313-SS 302	A 313-SS 302

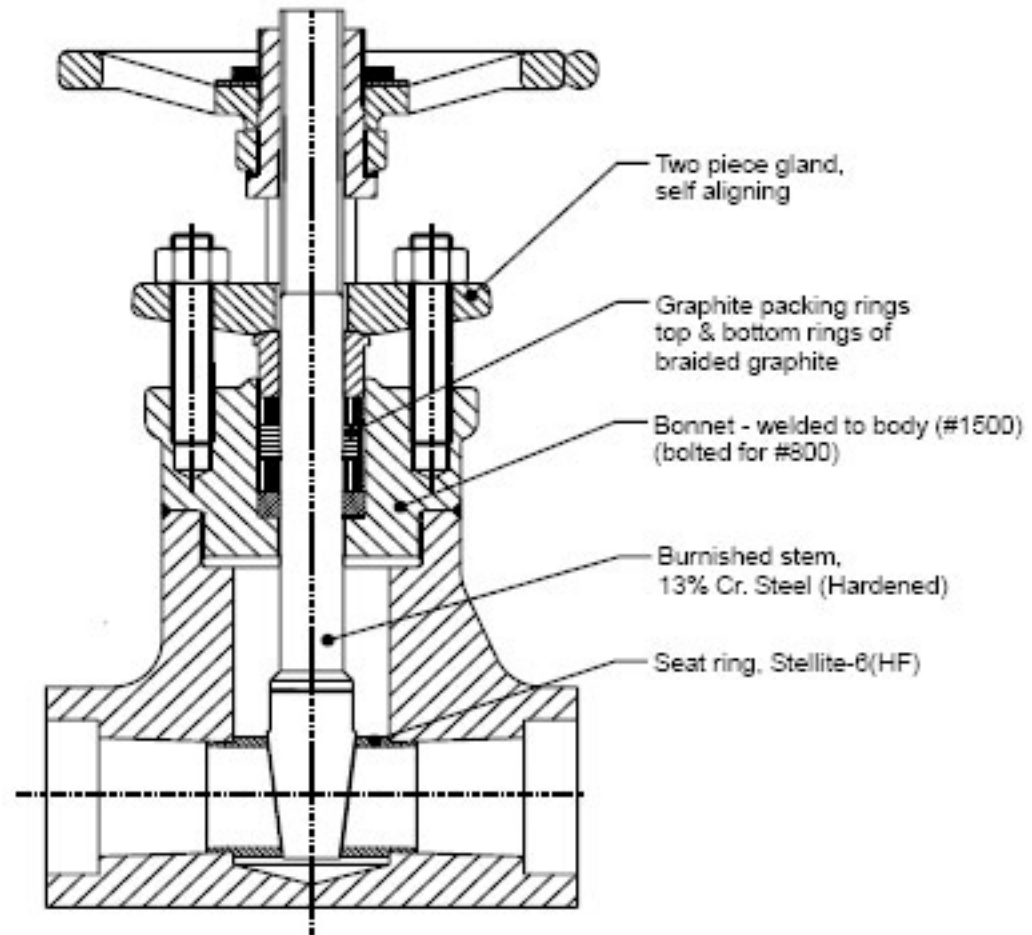


C. DIMENSIONS

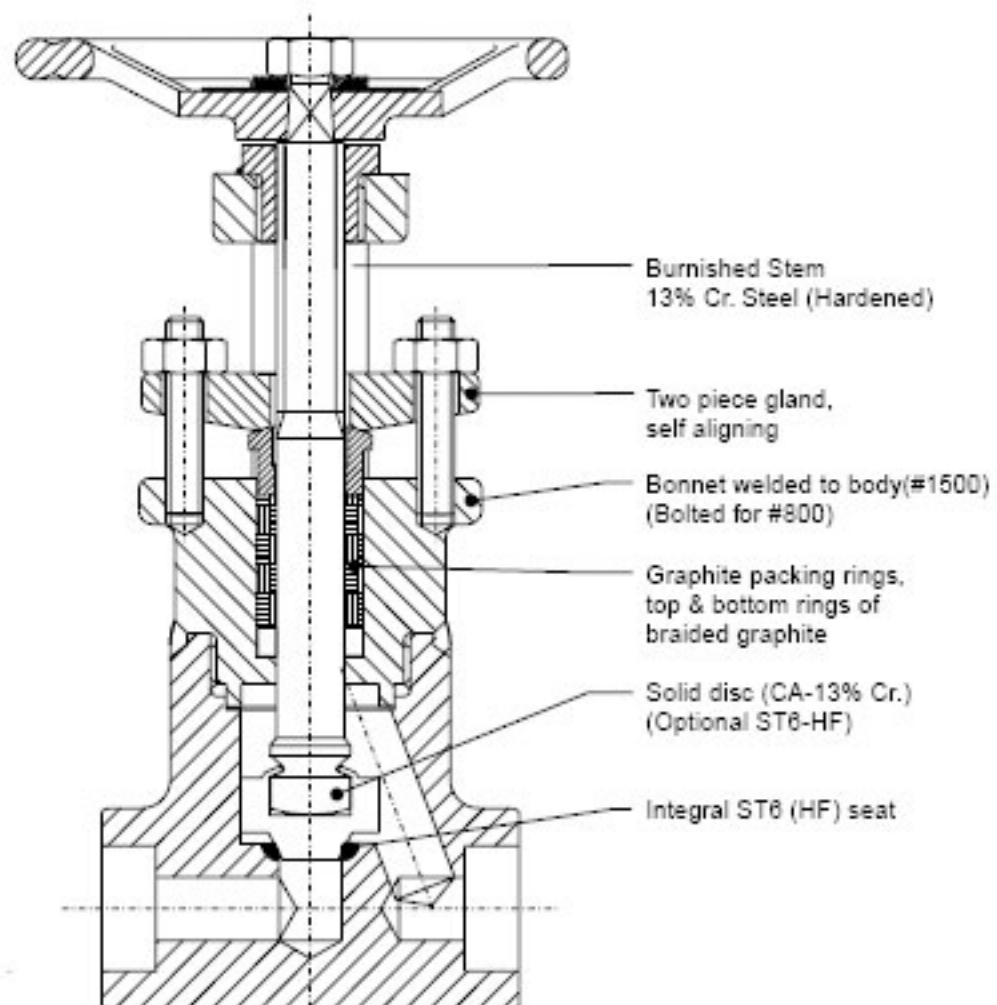
SIZE		E		ØB		C		A	
INCH	MM	INCH	MM	INCH	MM	INCH	MM	INCH	MM
1/2	15	3.4	85	0.9	21.8	3.0	76	0.4	10
3/4	20	3.9	98	1.1	27.1	3.0	76	0.5	13.0
1	25	4.1	104	1.3	33.8	3.5	90	0.5	13.0
1½	40	5.7	144	1.9	48.7	4.7	120	0.5	13.0
2	50	5.7	144	2.4	61.1	5.0	127	0.6	16.0



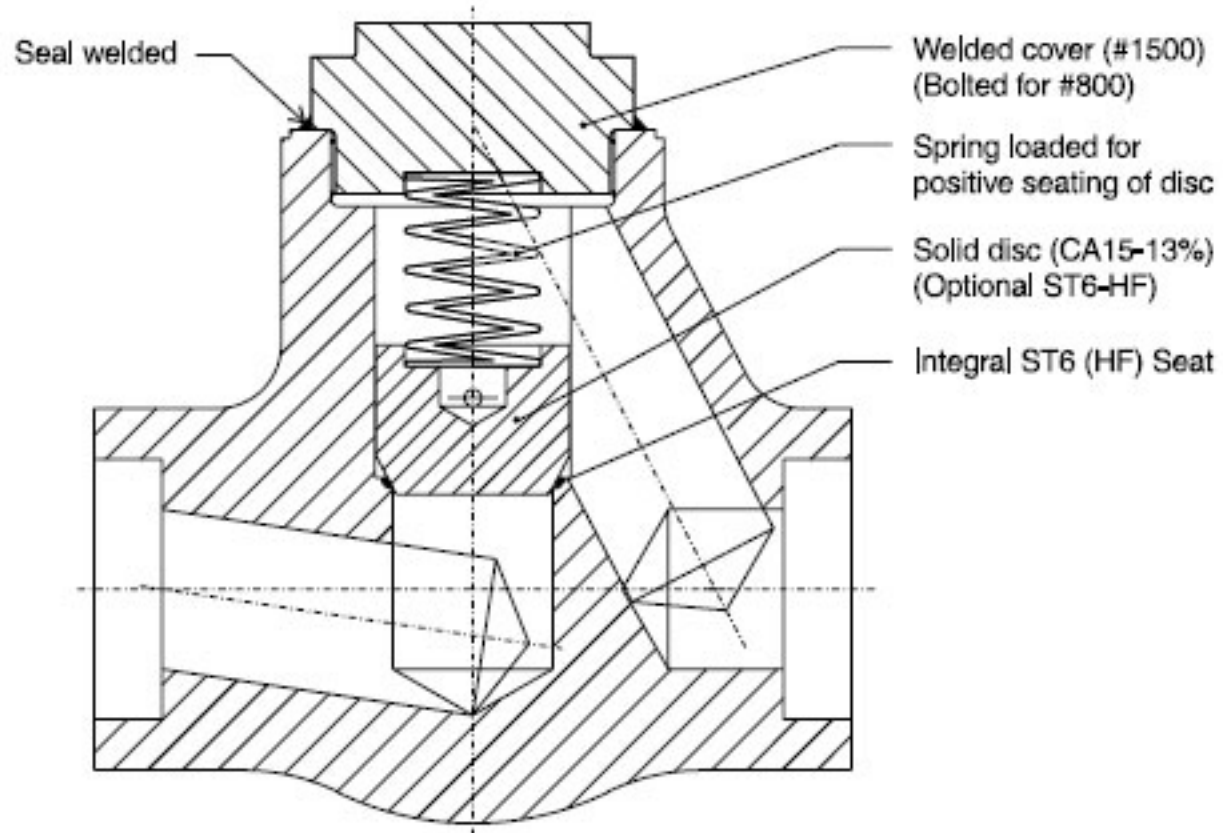
Product features to our Customer's benefit



Gate Valve



Globe Valve



Check Valve

